



Other services and special projects



Civil and commercial projects

Road side fencing, native vegetation, mulching, excavation and trenching, fencing watercourses, equine fencing and drainage works



Farm consultancy and management

Property assessment, budgeting and cash flow, infrastructure maintenance, crop and livestock management and recommendations.



Biodiversity and soil remediation

Research and implement measures for the control of light brown apple moth in the Adelaide Hills. Major involvement in large scale trials to combat the formation of acid sulphate soils in the Murraylands region.



Water resources and frost systems

Design, install and maintain irrigation and frost systems. Weather station and soil moisture monitoring sales and service.



Olive growing

Pest and disease management, spray programs and harvesting.



In-Field Ag Pty Ltd
 ABN 74 127 523 620
 10/24 Bridge Street
 Balhannah SA 5242 Australia

Tel: +61 8 8388 4948
 Fax: +61 8 8388 4984
 www.infield.com.au
 info@infield.com.au



About our company

From humble beginnings as a rural contracting firm, Infield evolved into a fully fledged vineyard contracting company known as Adelaide Hills Vineyard Contractors Pty Ltd during the 90s

During this time, Infield has developed and managed numerous projects in a range of locations including Victoria, New South Wales and the South East. These have varied in size from specialist boutique vineyards to major developments for large corporations.

To complement this experience we own and manage Junction Creek Vineyard located near Balhannah in the Adelaide Hills. The produce from this, and our other managed vineyards finds its way to several well-known wine brands throughout South Australia.

With an awareness of the need to produce the highest quality products, we aim to provide all the services required to produce premium products in the most cost effective manner. We can achieve this by way of our commitment to customer satisfaction by:

- > Continually revising our work practices to ensure we meet the highest industry standards
- > Developing new technology
- > Offering first class service at competitive rates
- > Maintaining a high standard of communication
- > Personalised service
- > Retaining a comprehensive fleet of machines and equipment
- > Providing a safe, satisfying work environment for our staff
- > Maintaining a network a key industry contacts and professional associates

In keeping with demand the company is now offering consultancy and contractor services across a broader agricultural spectrum. Our experience has readily adapted to a number of new rural ventures.

For more information please refer to the sheet included in this pack 'Other services and special projects'.

Agricultural services	
Consultancy	Property assessment, budgeting and cash flow, assistance with planning applications
Technical	Disease monitoring, bud dissection, soil and tissue assessment, weather station and monitoring equipment sales and service
Development	Development works as may be required
Management	Infrastructure maintenance, crop and livestock management and recommendations

In-Field Ag Pty Ltd
ABN 74 127 523 620
10/24 Bridge Street
Balhannah SA 5242 Australia

Tel: +61 8 8388 4948
Fax: +61 8 8388 4984
www.infield.com.au
info@infield.com.au



Other services and special projects

While Infield has successfully assimilated its experience as a provider of vineyard contracting services across a wide range of other rural activities, we are still looking forward to expanding the range of services we provide.

Civil & commercial projects

Infield has successfully tendered for various projects working with various government agencies and private contracting services. These have included:

- > Roadside and parklands fencing
- > Site and soil preparation prior to planting native grasses and trees
- > Mulching
- > Excavation and trenching work
- > Fencing watercourses
- > Equine fencing
- > Drainage works

Farm consultancy & management

An exciting new area for Infield, we are currently involved in a number of long term projects in the Adelaide Hills. Many years of relevant experience in viticulture development and management can provide valuable input in the following areas:

- > Business planning
- > Sound and realistic financial modeling
- > Rural property appraisal either prior to purchase or in preparation for sale
- > Specialist agronomic advice
- > Route to market negotiations
- > Property management and budgeting
- > Contracted management services

Irrigation & frost systems

Infield can design, install and maintain your irrigation and frost systems, which can be used in conjunction with the Metos® range of weather station and soil moisture monitoring equipment.

Acid soil remediation

Infield has been involved in large scale trials to combat the formation of acid sulphate soils along the Murray in partnership with Rural Solutions.

This work involved the application of lime in conjunction with a variety of vegetation options for the Lower Lakes region of the Murray River.



In-Field Ag Pty Ltd
ABN 74 127 523 620
10/24 Bridge Street
Balhannah SA 5242 Australia

Tel: +61 8 8388 4948
Fax: +61 8 8388 4984
www.infield.com.au
info@infield.com.au



Olive growing

Infield provides a range of services to olive growers in our region including:

Pest and disease control

This service involves regular inspections of your trees to identify and monitor the spread of the various insect pests and diseases to which olives are prone.

Infield can design and implement appropriate pest and disease prevention programs specific to your olive grove that will result in increased yield and improvements to plant health.

Soil and tissue testing

Monitoring plant health parameters via soil and tissue testing are essential components of any horticultural production system.

Infield can provide collection and analytical services that will ensure that the correct soil and nutritional inputs are applied to your grove.

Fertiliser, lime and gypsum spreading are part of this service.

Water resources

Infield can assist with water management in a number of ways:

- > Assessment of water requirements
- > Water quality testing
- > Irrigation system installation
- > Dam construction and refurbishment
- > Irrigation system maintenance and troubleshooting
- > Repairs to infrastructure
- > Supply of soil moisture and weather monitoring equipment

Pruning

Infield will undertake your pruning requirements to maintain plant health and structure to ensure ease of removing fruit at harvesting.

Weed control

Essential to good site management Infield will use the most appropriate control, taking into account the time of year, weed variety and sound environmental practices

Mid row management

Well maintained mid rows ensure maximum efficiency of all machinery passes.

Infield offers a range of mid row management services that can be tailored to your site. These include slashing, weed spraying, soil aeration and cover cropping.

Harvesting

Infield has access to reliable teams of seasonal staff to hand pick your fruit, and will arrange transport and cold storage as required.

FACT SHEET:

Integrated pest management control of scale in olive groves.

PHOTOGRAPH COURTESY OF
Mike Page
Mt Barker Springs SA





In-Field Ag Pty Ltd
ABN 74 127 523 620
10/24 Bridge Street
Balhannah SA 5242 Australia

Tel: +61 8 8388 4948
Fax: +61 8 8388 4984
www.infield.com.au
info@infield.com.au



Biodiversity for sustainability and profit

“Buckwheat give growers a biological advantage in Light Brown Apple Moth battle”

2007 saw Infield trial buckwheat at various locations in the Adelaide Hills as part of an on-going biodiversity project.

Research has demonstrated that buckwheat has outstanding potential to create a favourable environment for beneficial insects and thereby significantly reducing traditional vineyard overheads.

Infield has developed its own direct sowing system and equipment suitable for use in a variety of Australian conditions. The cost is comparable to the cost of a single spray application used in the control of Light Brown Apple Moth, scale and other insect pests.

In collaboration with the Lincoln University (NZ) and Melbourne University, Infield is now recognised as the primary “pathway to adoption” partner for its on-going biodiversity program.

Managing water resources

Infield is the national distributor for the METOS® range of weather and soil moisture monitoring equipment, manufactured in Austria by Pessl Instruments. These products offer a variety of solutions to manage your water resources, mitigate frost damage and the impact of pests and diseases. Data collected becomes a valuable tool for future decision making.

Climate change has long been acknowledged as a reality in the wine producing areas of Europe. Living in a state where we are already accustomed to drought and water restrictions a reality, even in the high rainfall regions, taking the initiative with water saving technology is a key part of our contribution to the industry.

This technology effortlessly translates into all agricultural pursuits governed by water restrictions.

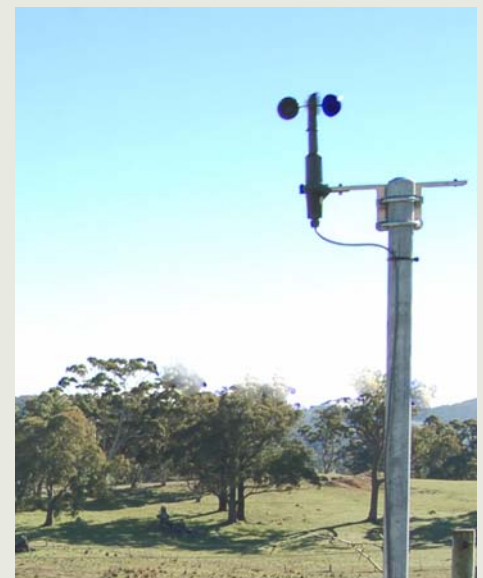
Benefits and cost savings

Creates favourable environment for beneficial insects

Reduction in the use of insecticides

Protection from LBAM infestation after chemical control window closes

Long term investment in the biodiversity of your property





MEDIA RELEASE

23 August 2007

Buckwheat gives growers a biological advantage In Light Brown Apple Moth battle

Following research trials in New Zealand, Adelaide Hills Vineyard Contractors (AHVC) is pioneering the use of buckwheat in Australia as an aid in the fight against the endemic pest, Light Brown Apple Moth (LBAM). The nectar of the flower from the buckwheat provides valuable sustenance for parasitic wasps and other predatory beneficial insects to destroy the LBAM caterpillars. With the nectar as a food source the expected lifespan of the wasp increases from a few days to up to 35 days, dramatically increasing its effectiveness.

AHVC Managing Director Tom Ayers is excited by the results and economic benefits of Australia's first trial which he conducted during the 2007 vintage.

“When assessing the extensive research and trials conducted by Lincoln University in New Zealand, I was confident that it would work just as effectively in Australia,” Tom says.

“In October 2006 we sowed buckwheat in vineyards owned by AHVC. It worked so well that we will be using it on all AHVC managed sites for the 2008 vintage.”

“At the moment the cost¹ is cheaper than the cost of spraying against LBAM. Given the effect that LBAM can have on yields and the onset of botrytis, particularly in cool climate areas, means that growers have to act once the caterpillars have been detected on more than 5% of bunches.”

Tom believes the buckwheat solution is a strong value add for any grapegrower.

“When you have powerful international retailers like Tesco banning an increasing number of insecticides and clearly stating their preference for wines with grapes grown with minimal chemical assistance, you have to listen,” Tom said. “Which is why when a financially viable and effective biological control comes along, we always look to embrace it.”

Timing is the key to ensuring that buckwheat has the desired effect according to Tom.

“Depending on the climate of the region the buckwheat crop needs to be sown between Mid October and the start of November every year,” he said. “This is critical, as at this time the wasps are running out of other nectar sources and the LBAM caterpillars are beginning to attack the flowering vines. It only needs to be sown every ten rows², based on the research by Lincoln University on the flight distances of the wasps.”

“The period from sowing to flowering is only five weeks and it doesn't require fertilisation or irrigation – however if irrigation is available, one dose after sowing will help. It will work in low rainfall areas because it doesn't need to be a thick luscious ground crop – it is effective even if it's a bit patchy because it all has to do with the flowers and not the crop itself.”

Adelaide Hills Vineyard Contractors encountered no negative outcomes as a result of their trial.

“We didn't find any evidence of the buckwheat harbouring other dangerous pests, it died off naturally in the winter with the onset of frost and did a great job of helping the wasps control the LBAM caterpillars.”

¹ The cost of sowing is comparable to the cost of a single spray application, including chemicals, in the control of LBAM

² Trial based on 2.6 metre rows